

**LSM4 Antibody (Center)**  
**Affinity Purified Rabbit Polyclonal Antibody (Pab)**  
**Catalog # AP5835c****Specification**

---

**LSM4 Antibody (Center) - Product Information**

Application	WB,E
Primary Accession	<a href="#">O9Y4Z0</a>
Other Accession	<a href="#">O9OXA5</a> , <a href="#">O3ZBK6</a> , <a href="#">NP_036453.1</a>
Reactivity	Human, Mouse
Predicted	Bovine
Host	Rabbit
Clonality	Polyclonal
Isotype	Rabbit IgG
Calculated MW	15350
Antigen Region	47-74

**LSM4 Antibody (Center) - Additional Information****Gene ID** 25804**Other Names**

U6 snRNA-associated Sm-like protein LSm4, Glycine-rich protein, GRP, LSM4

**Target/Specificity**

This LSM4 antibody is generated from rabbits immunized with a KLH conjugated synthetic peptide between 47-74 amino acids from the Central region of human LSM4.

**Dilution**

WB~~1:1000

E~~Use at an assay dependent concentration.

**Format**

Purified polyclonal antibody supplied in PBS with 0.09% (W/V) sodium azide. This antibody is purified through a protein A column, followed by peptide affinity purification.

**Storage**

Maintain refrigerated at 2-8°C for up to 2 weeks. For long term storage store at -20°C in small aliquots to prevent freeze-thaw cycles.

**Precautions**

LSM4 Antibody (Center) is for research use only and not for use in diagnostic or therapeutic procedures.

**LSM4 Antibody (Center) - Protein Information****Name** LSM4

**Function** Plays a role in pre-mRNA splicing as component of the U4/U6- U5 tri-snRNP complex that is involved in spliceosome assembly, and as component of the precatalytic spliceosome (spliceosome B complex) (PubMed:[28781166](#)). The heptameric LSM2-8 complex binds specifically to the 3'-terminal U-tract of U6 snRNA (PubMed:[10523320](#)).

**Cellular Location**

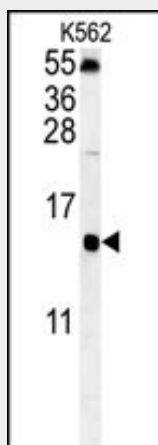
Nucleus

**LSM4 Antibody (Center) - Protocols**

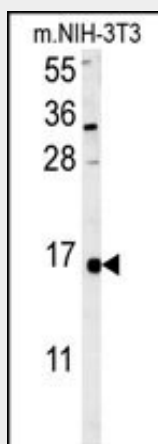
Provided below are standard protocols that you may find useful for product applications.

- [Western Blot](#)
- [Blocking Peptides](#)
- [Dot Blot](#)
- [Immunohistochemistry](#)
- [Immunofluorescence](#)
- [Immunoprecipitation](#)
- [Flow Cytometry](#)
- [Cell Culture](#)

**LSM4 Antibody (Center) - Images**



LSM4 Antibody (Center) (Cat. #AP5835c) western blot analysis in K562 cell line lysates (35ug/lane). This demonstrates the LSM4 antibody detected the LSM4 protein (arrow).



LSM4 Antibody (Center) (Cat. #AP5835c) western blot analysis in mouse NIH-3T3 cell line lysates (35ug/lane). This demonstrates the LSM4 antibody detected the LSM4 protein (arrow).